

[www.circle8bull.com](http://www.circle8bull.com)

**HYBRID VIGOUR.**

*Unlocking the profit*



**Mother nature's little profit booster**

If undelivered please return to  
"Tangryang" 50 Marulan South Rd  
Marulan NSW 2579

**BULL & FEMALE SALE. 18th AUGUST 2011. 90 HEAD.**  
"Sherwood" Ridds Lane, Duri via **Tamworth** NSW 2344

Postage  
Paid  
Australia



*"Unlocking the Profit" Bull Sale Volume 6*

**40 Black Simmental Angus Hybrid bulls  
46 Black Simmental Angus Hybrid cows and heifers.**

**18 August 2011 @ 1.30pm  
'Sherwood' Duri via Tamworth**

Inspections from 10am on sale day, or by appointment prior to the sale day.

**VENDOR**

**CIRCLE EIGHT TRADING AS LT COOPER CATTLE TRUST**

**ABN: 86 338 823 794**



CIRCLE EIGHT - Jeremy Cooper

M: 0427 549 261

E: [cooperbeefcattle@bigpond.com](mailto:cooperbeefcattle@bigpond.com)



Mark Haywood 0417 467 911

John Setttee 0408 297 368

Mark Barton 0419 488 256



Auction Plus Co-ordinator

Colin Campbell 0429 068 810

## How will you meet the challenge?

There is no doubt that Global credit crisis, climate change and global population growth have had and will continue to have a profound impact on the way that we conduct business in primary agriculture, the business of feeding the ever increasing world population.

In 1800 there were 1 Billion people on the globe, in 1960 3 Billion, in 2011 there will be 7 Billion, and projections suggest by 2045 there will be 9 Billion. (Source; population reference bureau and United Nations)

All across Australia we see evidence of the natural resource boom applying pressure to beef production, through the accumulation of land for mining purposes and labour resources to harvest these natural resources that help industry accommodate the growing world populations thirst to build new cities and boost large elements of the population out of poverty.

The pathway has been set and the challenge will be; we will produce beef with less land resources, with less reliable rainfall, with less available labour resources and with ever increasing input costs driven by the more affluent natural resources sector. On top of all this we will compete for market share against the pork and poultry industries, which is produced in controlled environments with high tech cross breeding genotypes and short gestation intervals.

The only way to manage this challenge and increase profit will be, by compressing input costs without sacrificing production and increasing output without sacrificing sustainability.

Now is the time to evaluate what drives profit. Profit post the farm gate seems to lay in an Angus advantage, where we see a premium for BLACK cattle over and above other colours. Profit inside the farm gate is and always will be driven by FERTILITY and RED MEAT YIELD per hectare.

At Circle Eight we believe that;

A) Key profit drivers are:

- ✓ Fertility (cow/soil)
- ✓ Optimum growth vs. environment
- ✓ Embracing Hybrid Vigor (HV)
- ✓ Carcass yield and quality

At Circle eight we advocate that;

B) A cow is a factory to produce protein, BEEF! And the beef cow of the future will evolve to become "INTERCHANGEABLE" in her market endpoint production focus. She will be

- ✓ Black and Angus in her type, (moderate and polled)
- ✓ Highly fertile
- ✓ Embrace and deliver (HV) (some percentage European genetic makeup)
- ✓ In one generation can produce commodity cattle for the long fed high quality trade or the short fed, high yield market. (dependent on the cost of finishing inputs)

At Circle Eight we believe;

C) One of the easiest ways to manage these challenges is the use of structured, well researched Hybrid bulls bred under the same policies and procedures as high end seedstock operations. Black Simmental brings to the table maternal strengths as well as the most comprehensive data bases in the world for carcass and growth traits, second only to Angus. Combined with Angus, which is the must use base for all successful commercial beef production, Black Simmental Angus Hybrids go a long way to resolving through Hybrid Vigor many of the challenges that lay ahead.

## What is Hybrid vigor?(HV)

- ✓ (HV) refers to the measure of performance superiority of crossbreds or hybrids over the average performance of the purebred parents.
- ✓ It is classified as either, individual, expressed by the hybrid calf, or maternal expressed by the hybrid cow.
- ✓ Animals from unrelated breeds that are crossed e.g. European\* British exhibit higher levels of (HV), than crosses of similar breeds e.g. British\*British
- ✓ Generates larger improvements in lower heritable traits

Table 1: Summary of heritability and level of (HV) by trait type

Trait	Heritability	Level of Hybrid vigor
Carcass / end product Skeletal measurements Mature weight	High	Low (0 to 5%)
Growth weight Birth weight Weaning weight Yearling weight Milk production	Medium	Medium (5 to 10%)
Maternal ability Reproduction Health Cow longevity Overall cow productivity	Low	High (10 to 30%)

### **What is maternal Hybrid vigor (MHV)?**

(MHV) is the measure of the performance advantage of crossbred cows over their purebred counterparts. (MH) accounts for 2/3 of this performance advantage.

### **How does the cow achieve (MHV)?**

(MHV) improves the reproductive performance, longevity and durability of the cow. The improvement of the “mothering ability” a cow provides for her calf is manifested in the improvement in calf survivability to weaning and increases weaning weight.

### **Why is (MH) so important?**

- ✓ The Meat Animal Research Centre (MARC) Clay Centre Nebraska, USA, reported a 8% increase in weaning weight / cow exposed, of crossbred calves compared against straight bred calves, both reared on straight bred cows.
- ✓ 15% increase for calf weaned / cow exposed, when comparing the crossbred cows against the straight bred cows both rearing crossbred calves.
- ✓ (IHV) gain + (MHV) gain + increased longevity of 1.5 years of crossbred cows over that of straight bred cows equates to a 25% production gain.
- ✓ Crossbred cows have the potential to earn more dollars! 25% more dollars!

### **What is a Hybrid?**

- ✓ The F1's or first cross of purebred parents.
- ✓ Can also be related to the progeny of two F1 parents,
- ✓ They can also be called synthetics

### **What is breed complementarity?**

- ✓ Breed complementarity which refers to the production of a more desirable offspring from the mating of parents that are genetically different from each other, but have complementary attributes.
- ✓ 40 years ago the advent of the Angus x Hereford black baldy revolutionized the industry and went a long way to match the strengths and mask the weaknesses of each. This was complementary.
- ✓ Important part of the crossbred advantage.

### **How can I harness breed complementarity?**

- ✓ Do not be fooled into the idea that you no longer need to select and purchase quality bulls or semen for your herd.
- ✓ (HV) cannot overcome low-quality genetic inputs.
- ✓ The quality of progeny from a crossbreeding system is limited by the quality of the parent stock that produced them.
- ✓ Conversely, do not believe that selection of extremely high-quality bulls or semen or choosing the right breed will offset the advantages of an effective crossbreeding system.
- ✓ Crossbreeding and sire selection are complementary and should be used in tandem to build an optimum mating system in commercial herds.

***“Genetic potential for yield grade, marbling and carcass weight are more nearly optimized in cattle with a 50:50 British / European ratio”.***

The use of a Black Simmental-Angus Hybrid is not about change! It's about doing what you've always done, producing beef! But is about producing beef in a changing world!

It's real! L T Cooper cattle trust recently sold 10 month old steer's 365kg curfew weight, in the Moss Vale livestock exchange for an average of \$2.43/kg to come back at \$886.95. These steers had an average yield of 56%.

Colin and Cameron Tomkins “Lynwood” Geurie have been averaging a tick over \$1000.00 for milk tooth steers 400 to 450kg live, finished off grass. Purchased primarily by JBS Swift.

**kindest regards,**

**L T Cooper cattle trust.**

## **Location**

From Tamworth travel approx 5kms west on Gunnedah Road & turn left into New Winton Road. Travel 15kms & turn right into Ridds Lane. “Sherwood” is the first property on the right.

From Gunnedah travel towards Tamworth & turn right onto Beehive Lane. Travel approx 8 kms & turn right at Old Winton Road. Travel approx 1 km & turn left into Ridds Lane. Travel 1.5 kms & “Sherwood” is on your left.

## Sale Information

### **Breedplan:**

The E series bulls have EBVS, which can only be compared to each other and not GROUP ANGUS EBVS.

The F series bulls have been scanned on the 16/06/2011 and SHOULD have EBVS available on sale day.

### **Fertility:**

All sale bulls will be vet inspected prior to the sale and will come with a certified vet certificate for fertility and breeding soundness.

### **Health:**

All bulls have had primary and secondary vaccinations for 7 in 1 and pesti-guard as calves and again annually. All bulls have been drenched on a quarterly basis with Ivomec.

### **Insurance:**

At the fall of the hammer the bulls will be the responsibility of the purchaser. All care but no responsibility will be taken by the vendor past this point.

**Inspections** prior to sale day; Private inspections can be arranged by appointment by contacting Jeremy Cooper, 0427 549 261 or our sale manager Mark Haywood, 0417 467 911.

### **Rebate:**

A rebate of 4% will be paid to agents who accompany their client to the sale. Agents must nominate their clients 24 hours pre the sale by email, [cooperbeefcattle@bigpond.com](mailto:cooperbeefcattle@bigpond.com) with; Client name, trading details and pic numbers.

### **Disclaimer**

Whilst all care and attention has been paid to the accuracy in the completion of this catalogue, neither the vendors nor the selling agents or representatives thereof assume any responsibility whatsoever for the correctness, use or interpretation of the information on the animals included in this sale catalogue.

## Circle 8 Cow Herd

The cooper family has been breeding seed-stock since 1956. Our focus has always been commercial acceptance focusing on breeding bulls by applying simple and practical commercially relevant selection pressure to our females. We are true believers in Breedplan and try to harvest as much data as possible. Pretty cows don't pay the bills; hard working, fertile cows that wean heavy calves with carcass quality and embrace Hybrid Vigour pay the bills, drought or flood!

Two main families dominate our pastures, Perfections and Rosebuds.

The Perfections came to us from Sandon/Glenoch Chinchilla Queensland. The base cow P13 produced over \$100,000.00 in progeny and genetic sales recording 48 progeny, she didn't win any shows but won the hearts of all that viewed her. Her two most prolific daughters were T28 and T29 with 66 progeny between them produced our Kathleen Cornell winning pair at the Angus National show and sale in 2000 V71 and V67 realizing \$18,000.00 and \$14000.00 respectively both going to stud. Z128 a 036 daughter of T28 with 9 progeny recorded is setting new standards with three sons averaging over \$5000.00 and Hybrid daughters in the donor pen, she is the dam of BBBC139 sire of sale bulls in 2011. Y65 a full sister to V71 with 19 progeny recorded 13 of which have been bulls to average \$4500.00.

In all nine Perfection donors have recorded 186 progeny in our herd.

The Rosebuds came to us via Wilson Downs in WA. South Cross L11 was a massive big bodied Argwen Jumbo daughter who at twenty is active with 108 progeny recorded! Her grand dam Wilson Downs B30 was a deep sided clean fronted Early Sunset Emulous 60E daughter. 60E is acclaimed by many to be the best breeder of Angus females ever to grace the breed and went on to breed Power play M032 who breed Scotch Cap the benchmark of all carcass traits. V105 formed the foundation for us with 66 recorded progeny, selling bulls to \$15000.00 and leaving us with the best flush in our history. B/R New Design 036 crossed with V105 left us three daughters, most notably Z127 with six recorded progeny with three sons to average \$6666.00 topping at \$10,000.00 for C242 to go to stud at Cobaddah Creek. Z154 a Papa Equator daughter has 10 progeny recorded with three sons to average \$4250.00. Z155 31 progeny recorded in the herd, most notably a Papa Equator 2928 daughter C113 who had the sale topper in 2010 and is starting to command respect from all that see her progeny. We will have Star sons in the 2012 sale.

Ten Rosebud donors have recorded 163 progeny in our herd.

Our cows work under the "thrive and survive or die" motto. We calve at 21 months, any assists got to Mc Donald's. It's that simple.

# Carcass Data and USDA Grades

These cattle were either Chi/Angus or Simm/ Angus, were average age 15mths and fed for 300days with 120 days on a finisher ration. Weights are still in pounds. The important thing to look at here is the average yield, average carcass weight and marble score. This is a perfect example of breed complementarity and Hybrid Vigour at work!

91.4% of this group graded choice or better (AUS meat marble score 3 or better) and all pens had an average yield of 64.2%! How many purebred producers would have feedback data like this in Australia?

		Harvested 7/18/05					Harvested 8/1/05			Harvested 8/24/05	Harvested 9/8/05	Harvested 9/29/05	Harvested 9/29/05	Summary Totals
		41 Non-Implant Heifers	37 Non-Implant Steers	29 Non-Implant Heifers	40 Non-Implant Steers	59 Implant Heifers	38 Non-Implant Steers	78 Non-Implant Steers	57 Non-Implant Heifers	17 Non-Implant Steers	396 Total Steers & Heifers			
All March, April & May 2004 born Steers & Heifers		1150	1311	1119	1245	1116	1348	1296	1264	1333	1239			
Plant Live Wt.		739	840	725	800	722	865	853	832	877	805			
Dressing %		63.71%	64.06%	64.80%	64.25%	64.70%	64.11%	63.68%	64.26%	64.25%	64.16%			
Master Chef-Prime		46.40%	24.30%	34.48%	10.00%	20.34%	35.53%	11.54%	36.84%	0.00%	24.63%			
Master Chef-Choice (CAB)		39.00%	56.80%	32.76%	45.00%	50.85%	47.37%	46.15%	38.60%	23.53%	44.07%			
Chef's Table Choice		12.20%	16.20%	20.70%	35.00%	21.19%	17.11%	38.46%	3.51%	41.18%	24.70%			
Choice or Higher		97.60%	97.30%	87.94%	90.00%	92.38%	100.00%	96.15%	94.74%	64.71%	93.44%			
Chef's Table Select		2.40%	2.70%	6.90%	10.00%	5.00%	0.00%	3.85%	3.51%	35.29%	0.50%			
Other (BS, DC, Std.)		2.40%	4.10%	6.00%	0.00%	0.85%	0.00%	1.28%	1.75%	0.00%	0.50%			
REA		13.12	13.51	12.89	13.09	12.48	13.48	13.94	13.67	14.79	13.39			
BF		0.44	0.42	0.51	0.46	0.50	0.52	0.49	0.47	0.44	0.48			
YG		2.97	3.23	3.14	3.23	3.27	3.55	3.24	3.38	2.95	3.24			
Ave. Premium/Discount*		\$ 65.42	\$ 37.46	\$ 38.37	\$ 25.96	\$ 29.52	\$ 50.10	\$ 28.02	\$ 50.69	\$ (10.05)	\$ 37.30			

\*The Average Premium or Discount is the total dollars paid out on each carcass based on the quality grade, yield grade and meeting the specification for weight range. The Premium or Discount is the amount paid over & above (or subtracted from) the base price negotiated at time of sale. In the case of all loads listed here, the base price in the beef was anywhere from \$3.00 to \$6.00/cwt. above the average cash price reported for the particular week harvested

## USA

USDA MB SCORE	USDA Marbling term	A		B		C		D		E		USDA Marbling term
		100	200	200	300	300	400	400	500	500	600	
800+	Moderately abundant	Prime				Commercial						Moderately abundant
780 - 790	Slightly abundant											Slightly abundant
700	Slightly abundant											Slightly abundant
680 - 690	Moderate	Choice				Utility						Moderate
600	Moderate											Moderate
580 - 590	Modest											Modest
500	Modest											Modest
480 - 490	Small											Small
400	Small											Small
380 - 390	Slight	Select										Slight
300	Slight											Slight
280 - 290	Traces	Standard				Cutter						Traces
200	Traces											Traces
100	Practically devoid											Practically devoid

%IMF

Correlation IMF%

To AusMeat Marble Score

3.8 - 4.5

2 - 2.5

4.6 - 5.2

2.6 - 2.9

5.3 - 6.3

3.0 - 3.5

**LOT 1 6 SIM ANGUS COWS**

Purchaser	Price

**LOT 2 6 SIM ANGUS COWS**

Purchaser	Price

**LOT 3 6 SIM ANGUS COWS**

Purchaser	Price

**LOT 4 5 SIM ANGUS COWS**

Purchaser	Price

**LOT 5 6 SIM ANGUS HEIFERS**

Purchaser	Price

**LOT 6 6 SIM ANGUS HEIFERS**

Purchaser	Price

**LOT 7 6 SIM ANGUS HEIFERS**

Purchaser	Price

**LOT 8 5 SIM ANGUS HEIFERS**

Purchaser	Price



**Croak**  
media

design | print | deliver

- Sale Catalogues
- Newsletters
- Signage & Banners
- Invitations
- Brochures & Flyers
- Logo Design
- Stationery
- Advertisements for Print

- ✓ Background in agriculture & stud stock
- ✓ Experienced in design & printing
- ✓ Based in Central West NSW
- ✓ Prominent & successful stud client base
- ✓ Flexible and fast results to suit you
- ✓ Print & distribution options available

For a friendly discussion of your requirements,  
contact Liana @ Croak Media today.

0401 327 445 | [info@croakmedia.com.au](mailto:info@croakmedia.com.au)  
[www.croakmedia.com.au](http://www.croakmedia.com.au)

# LOT 9

# CIRCLE 8 E129 (MBR)(AI)

DOB 10/07/2009 (25 MTHS)

Breed: Hybrid 75% BLK Simmental 25% Angus

Sire: SRS RIGHT-ON 22R (P) (BL)(MBR) ZSIIMUPA022

Animal: CIRCLE 8 E129(MBR)(AI) BBBE129

NICHOLS LEGACY G151 (P) (BL)(MBR) ZSIIMUPS15  
 CNS DREAM ON L186 (P) (BL) (ET)(MBR) ZSIIMUPW186  
 CNS SHEEZA DREAM K107W(MBR) ZSIPEDBX1948

Scan data collected on the 16/06/2011

SCROTAL	P8	RIB	EMA	IMF
---------	----	-----	-----	-----

Dam: CIRCLE 8 PERFECTION C117(MBR)(ET) BBBC117

B/R NEW DIMENSION 7127 USA7127  
 CIRCLE 8 7127 PERFECTION Z140(AI)(ET) BBBZ140  
 SANDON PERFECTION P13(AI) QASP13

BWT	200	400	600	SS	EMA	RIB	P8	RBY	IMF%
EBV.2	23	40	54	0	2.8	0.6	-0.3	1	0.4

Notes: A ¼ Black Simmental to start off 2011. E129 is sound and free moving. We would use him to add pay weight to Angus based cows. With a who's who of pedigrees in the Simmental section the daughters could be retained as replacements. An ideal choice for vealer or short feed beef production.

### TRAITS OBSERVED BW

Weight	Actual birth weight	EMA	Scrotal	Frame	Purchaser	Price

# LOT 10

# CIRCLE 8 E43(MBR)(ET)

DOB 01/07/2009 (25 MTHS)

Breed: Hybrid 50% BLK Simmental 50% Angus

Sire: HC HUMMER 12M(MBR) ZSIIMUPX012

Animal: CIRCLE 8 E43(MBR)(ET) BBBE43

V D A R NEW TREND 315 USA315  
 B/R NEW DESIGN 036 USA036  
 B/R BLACKCAP EMPRESS 76 USA76

Scan data collected on the 16/06/2011

SCROTAL	P8	RIB	EMA	IMF
---------	----	-----	-----	-----

43	12	9	115	5.6
----	----	---	-----	-----

Dam: CIRCLE 8 PREFECTION Y65(AI)(ET) BBBY65

TC STOCKMAN 365 USA365  
 CIRCLE 8 365 PERFECTION T29(AI)(ET) BBBT29  
 SANDON PERFECTION P13(AI) QASP13

BWT	200	400	600	SS	EMA	RIB	P8	RBY	IMF%
EBV.3	26	48	60	0.2	1.8	0	-0.6	0.8	0.6

Notes: HC Hummer 12M is a calving ease specialist in the Simmental population who excels in rib eye and marbling. Y65 was the dam of the top priced bull in 2010 at \$10K. E43 is long bodied with plenty of rib. He should be used to create excellent crossbred dams and short fed commodity calves.

### TRAITS OBSERVED BW

Weight	Actual birth weight	EMA	Scrotal	Frame	Purchaser	Price

# LOT 11

# CIRCLE 8 E45(MBR)(ET)

DOB 04/09/2009 (23 MTHS)

Breed: Hybrid 50% BLK Simmental 50% Angus

Sire: HC HUMMER 12M(MBR) ZSIIMUPX012

Animal: CIRCLE 8 E45(MBR)(ET) BBBE45

PARAMONT AMBUSH 2172 USA2172  
 B C C BUSHWACKER 41-93 USA41-93  
 R C ANITA T BANDO 918903 USA918903

Scan data collected on the 16/06/2011

SCROTAL	P8	RIB	EMA	IMF
---------	----	-----	-----	-----

39	8	6	115	5.6
----	---	---	-----	-----

Dam: CIRCLE 8 41-93 PERFECTION Z180(AI)(ET) BBBZ180

B/R NEW DIMENSION 7127 USA7127  
 CIRCLE 8 7127 PERFECTION W75(AI)(ET) BBBW75  
 CIRCLE 8 PERFECTION OF USA155 T28(AI)(ET)

BWT	200	400	600	SS	EMA	RIB	P8	RBY	IMF%
EBV.7	32	55	67	0.5	2.8	0.8	-0.7	1.1	0.2

Notes: Bred in a similar vein to Lot 2, E45 also hails from the famous Perfection P13 heritage. With excellent skin and hair freedom of movement with excellent muscle expression, this is a bull where the opportunities are endless. Maternal, terminal or both.

### TRAITS OBSERVED BW

Weight	Actual birth weight	EMA	Scrotal	Frame	Purchaser	Price

Average EBVS for the E group bulls only

BWT	200	400	600	SS	EMA	RIB	P8	RBY	IMF%
3.6	27	48	60	0.5	0.5	-0.4	0.8	0.42	

**LOT 12****CIRCLE 8 E37 (MBR)(ET)**

DOB 29/08/2009 (24 MTHS)

Breed: Hybrid 50% BLK Simmental 50% Angus

Sire: HC HUMMER 12M(MBR) ZSIIMUPX012

Animal: CIRCLE 8 E37(MBR)(ET) BBBE37

PARAMONT AMBUSH 2172 USA2172

B C C BUSHWACKER 41-93 USA41-93

R C ANITA T BANDO 918903 USA918903

Dam: CIRCLE 8 41-93 PERFECTION Z180(AI)(ET) BBBZ180

B/R NEW DIMENSION 7127 USA7127

CIRCLE 8 7127 PERFECTION W75(AI)(ET) BBBW75

CIRCLE 8 PERFECTION OF USA155 T28(AI)(ET) BBBT28

Scan data collected on the 16/06/2011

SCROTAL	P8	RIB	EMA	IMF
41	9	7	110	5.1

BWT	200	400	600	SS	EMA	RIB	P8	RBY	IMF%
EBV.1	29	50	60	0	3.1	0.5	0.5	1	0.3

Notes: A full brother to Lot 3 use the same way.

**TRAITS OBSERVED BW**

Weight	Actual birth weight	EMA	Scrotal	Frame	Purchaser	Price

**LOT 13****CIRCLE 8 E28 (MBR)(ET)**

DOB 18/08/2009 (25 MTHS)

Breed: Hybrid 50% BLK Simmental 50% Angus

Sire: GW LUCKY DICE 187H (P) (BL)(MBR) ZSIIMUPT187

Animal: CIRCLE 8 E28(MBR)(ET) BBBE28

PAPA POWER 096 USA096

PAPA EQUATOR 2928 USA2928

PAPA ENVIOUS BLACKBIRD 8849 USA8849

Dam: CIRCLE 8 2928 ROSEBUD Z154(AI)(ET) BBBZ154

STEVENSON ROYCE 741C USA741C

CIRCLE 8 ROSE BUD V105(AI)(ET) BBBV105

SOUTH CROSS L11(AI)(ET) NSCL11

Scan data collected on the 16/06/2011

SCROTAL	P8	RIB	EMA	IMF
41	9	7	112	5.7

BWT	200	400	600	SS	EMA	RIB	P8	RBY	IMF%
EBV.5	35	62	78	1.3	2.3	-0.2	-0.2	0.8	0.2

Notes: Here is a bull to inject some size into your traditional style cows. A super soft short haired bull that will cover some country. Lucky Dice is to Simmental what Scotch Cap is to Angus. Big nuts, big rib and a big raw IMF scan.

**TRAITS OBSERVED BW**

Weight	Actual birth weight	EMA	Scrotal	Frame	Purchaser	Price

Average EBVS for the E group bulls only

BWT	200	400	600	SS	EMA	RIB	P8	RBY	IMF%
3.6	27	48	60	0.5	0.5	-0.4	0.8	0.42	

**LOT 14****CIRCLE 8 F100 (MBR)(AI)**

DOB 25/05/2010 (15 MTHS)

Breed: Hybrid 50% BLK Simmental 50% Angus

Sire: TNT DUAL FOCUS T249(MBR) ZSIIMUDC249

Animal: CIRCLE 8 F100(MBR)(AI) BBBF100

LCHMAN LUCKY BUCK 7049C (BL)(MBR) ZSIN7049C

GW LUCKY DICE 187H (P) (BL)(MBR) ZSIIMUPT187

407D (BL)(MBR) ZSIP407D

Dam: CIRCLE 8 MISSPERKYDICE D123(MBR)(AI)(ET) BBBD123

B/R NEW DESIGN 036 USA036

CIRCLE 8 036 PERFECTION Z128(AI)(ET) BBBZ128

CIRCLE 8 PERFECTION OF USA155 T28(AI)(ET) BBBT28

Scan data collected on the 16/06/2011

SCROTAL	P8	RIB	EMA	IMF
40.5	7	6	108	4.6

Notes: The first TNT Dual Focus son to sell in Australia. We couldn't be happier with the Dual Focus cattle. F100 is a heifer's first calf; he scanned 110cm eye muscle area with 38 nuts at 12 months. We believe this is a sure bet heifer bull with some grunt, and pedigree suggests the same. If you have been using our bulls and wish to join the heifers please consider Lot 14.

**TRAITS OBSERVED BW**

Weight	Actual birth weight	EMA	Scrotal	Frame	Purchaser	Price

**LOT 15****CIRCLE 8 F104 (MBR)**

DOB 27/05/2010 (15 MTHS)

Breed: Hybrid 50% BLK Simmental 50% Angus

Sire: CIRCLE 8 C139(MBR)(AI)(ET) BBBC139

Animal: CIRCLE 8 F104(MBR) BBBF104

LCHMAN LUCKY BUCK 7049C (BL)(MBR) ZSIN7049C  
GW LUCKY DICE 187H (P) (BL)(MBR) ZSIIMUPT187  
407D (BL)(MBR) ZSIP407D

Dam: CIRCLE 8 PERFECTION D137(MBR)(ET) BBBD137

B/R NEW DESIGN 036 USA036  
CIRCLE 8 036 PERFECTION Z128(AI)(ET) BBBZ128  
CIRCLE 8 PERFECTION OF USA155 T28(AI)(ET) BBBT28

Scan data collected on the 16/06/2011

SCROTAL	P8	RIB	EMA	IMF
39	7	7	92	5.1

Notes: C139 was bought by dad in the 2008 sale for \$5k. He bred so well we used him on some select cows and in 2011 will join him to all our heifers. F104's dam is the grand dam of Lot 14, (what did we say about buying structured well designed Hybrids bulls?) Pedigree suggest that F104 will leave you with deep bodied broody cows and steers that will press down hard on the scales at weaning and finish easily to be high yielding carcass's with average marbling.

**TRAITS OBSERVED BW**

Weight	Actual birth weight	EMA	Scrotal	Frame	Purchaser	Price

**LOT 16****CIRCLE 8 F107 (MBR)(AI)**

DOB 01/06/2010 (14 MTHS)

Breed: Hybrid 50% BLK Simmental 50% Angus

Sire: TNT DUAL FOCUS T249(MBR) ZSIIMUDC249

Animal: CIRCLE 8 F107(MBR)(AI) BBBF107

NICHOLS LEGACY G151 (P) (BL)(MBR) ZSIIMUPS15  
CNS DREAM ON L186 (P) (BL) (ET)(MBR) ZSIIMUPW186  
CNS SHEEZA DREAM K107W(MBR) ZSIPEDBX1948

Dam: CIRCLE 8 ROSEBUD D180(MBR)(ET) BBBD180

STEVENSON ROYCE 741C USA741C  
CIRCLE 8 ROSE BUD V105(AI)(ET) BBBV105  
SOUTH CROSS L11(AI)(ET) NSCL11

Scan data collected on the 16/06/2011

SCROTAL	P8	RIB	EMA	IMF
37	6	6	92	4.3

Notes: Another TNT Dual Focus with that trade mark length of body and softness. The combination of Dream on and Dual Focus with a 34 kg birth weight should make Lot 16 a heifer bull candidate.

**TRAITS OBSERVED BW**

Weight	Actual birth weight	EMA	Scrotal	Frame	Purchaser	Price

**LOT 17****CIRCLE 8 F106 (MBR)(AI)**

DOB 01/06/2010 (14 MTHS)

Breed: Hybrid 50% BLK Simmental 50% Angus

Sire: TNT DUAL FOCUS T249(MBR) ZSIIMUDC249

Animal: CIRCLE 8 F106(MBR)(AI) BBBF106

KENCO/MF POWERLINE 204L(MBR) ZSI2115962  
LBR CROCKETT R81(MBR)(RED) ZSIIMUPA081  
LBR NIGHT DREAM M22(MBR) ZSI2177957

Dam: CIRCLE 8 PERFECTION D127(MBR)(ET) BBBD127

B/R NEW DIMENSION 7127 USA7127  
CIRCLE 8 PERFECTION Y70(AI)(ET) BBBY70  
CIRCLE 8 365 PERFECTION T29(AI)(ET) BBBT29

Scan data collected on the 16/06/2011

SCROTAL	P8	RIB	EMA	IMF
38	7	7	93	5.4

Notes: Power, length of body and muscle is what you would say if you read the pedigree and when you see Lot 17. LBR Crockett, HC Hummer 12M, B/R New Dimension 7127, GT Jet Max, Scotch Cap, TC Stockman 365. A pedigree that says simply, BEEF production.

**TRAITS OBSERVED BW**

Weight	Actual birth weight	EMA	Scrotal	Frame	Purchaser	Price

# LOT 18

# CIRCLE 8 F109 (MBR)(AI)

DOB 06/06/2010 (14 MTHS)  
Breed: Hybrid 50% BLK Simmental 50% Angus

Sire: TNT DUAL FOCUS T249(MBR) ZSIIMUDC249

Animal: CIRCLE 8 F109 (MBR)(AI) BBBF109

KENCO/MF POWERLINE 204L(MBR) ZSI2115962  
LBR CROCKETT R81(MBR)(RED) ZSIIMUPA081  
LBR NIGHT DREAM M22(MBR) ZSI2177957

Dam: CIRCLE 8 PERFECTION D108(MBR)(ET) BBBD108

B/R NEW DIMENSION 7127 USA7127  
CIRCLE 8 PERFECTION Y70(AI)(ET) BBBY70  
CIRCLE 8 365 PERFECTION T29(AI)(ET) BBBT29

Scan data collected on the 16/06/2011

SCROTAL	P8	RIB	EMA	IMF
33	6	5	95	4.7

Notes: A full brother in blood to LOT 17. LBR Crockett bred super thick heavy bulls and the daughters are breeding this on in their progeny. If you wish to breed more kilos per hectare and add pay weight to the scales, lots 17 and 18 will do it.

### TRAITS OBSERVED BW

Weight	Actual birth weight	EMA	Scrotal	Frame	Purchaser	Price

# LOT 19

# CIRCLE 8 F135 (MBR)(AI)

DOB 19/07/2010 (13 MTHS)  
Breed: Hybrid 50% BLK Simmental 50% Angus

Sire: CIRCLE 8 D118(MBR)(ET) BBBD118

Animal: CIRCLE 8 F135(MBR)(AI) BBBF135

CNS DREAM ON L186 (P) (BL) (ET)(MBR) ZSIIMUPW186  
CIRCLE T ANTOINETTES STAR (P) (BL) (ET)(MBR) ZSIIMUPZ012  
NJC SVF ANTOINETTE K205(MBR) ZSIPEDBX3189

Dam: CIRCLE 8 PERFECTION C168(MBR)(AI)(ET) BBBC168

B/R NEW DIMENSION 7127 USA7127  
CIRCLE 8 PERFECTION Y68(AI)(ET) BBBY68  
CIRCLE 8 WET DREAMS R17(AI)(ET) BBBR17

Scan data collected on the 16/06/2011

SCROTAL	P8	RIB	EMA	IMF
38	12	9	94	5.3

Notes: Our Star daughters are breeding exceptionally well, as did Star himself. HC Power Drive 88H is a must have in a Black Simmental pedigree as is Lucky Dice and CNS Dream on. All appear in this soft skinned free moving Hybrid calf, backed by a rich Angus maternal line that has been the foundation of the Circle eight herd.

### TRAITS OBSERVED BW

Weight	Actual birth weight	EMA	Scrotal	Frame	Purchaser	Price

# LOT 20

# CIRCLE 8 F101(MBR)(AI)

DOB 25/05/2010 (15 MTHS)  
Breed: Hybrid 50% BLK Simmental 50% Angus

Sire: TNT DUAL FOCUS T249(MBR) ZSIIMUDC249

Animal: CIRCLE 8 F101(MBR)(AI) BBBF101

LRS PREFERRED STOCK 370C(MBR) ZSIIMUPN370  
SRS J914 PREFERRED BEEF (P) (BL)(MBR) ZSIIMUPU914  
SRS G733 GLIMMER(MBR) ZSIPEDBX1972

Dam: CIRCLE 8 MELODY D150(MBR)(ET) BBBD150

SUMMITCREST SCOTCH CAP OB45 USAOB45  
NAROOLA MELODY X46(AI) SEEX46  
NAROOLA MELODY U17(AI) SEEU17

Scan data collected on the 16/06/2011

SCROTAL	P8	RIB	EMA	IMF
37	10	9	100	5.7

Notes: The Melody cow family are thick, sound and moderate. F101 is no exception. He is long bodied and super thick. He will be well suited to short fed trade beef production.

### TRAITS OBSERVED BW

Weight	Actual birth weight	EMA	Scrotal	Frame	Purchaser	Price

**LOT 21****CIRCLE 8 F116 (MBR)(AI)**

DOB 10/06/2010 (14 MTHS)  
 Breed: Hybrid 50% BLK Simmental 50% Angus

Sire: GW LUCKY DICE 187H (P) (BL)(MBR) ZSIIMUPT187

Animal: CIRCLE 8 F116(MBR)(AI) BBBF116

S A F FOCUS OF E R USA6163  
 BALDRIDGE NEBRASKA 901 USA13412671  
 BALDRIDGE FLOSSIE 367 USA12885591

Dam: CIRCLE 8 PERFECTION C135(AI)(ET) BBBC135

G T JET MAX USA155  
 CIRCLE 8 PERFECTION OF USA155 T28(AI)(ET) BBT28  
 SANDON PERFECTION P13(AI) QASP13

Scan data collected on the 16/06/2011

SCROTAL	P8	RIB	EMA	IMF
38	9	7	99	5.2

Notes: F 116 is a nicely made Lucky Dice son. With a raw EMA of 99cm at 12 months and a 5.2 raw IMF%, he will be well positioned to produce excellent commodity cattle.

**TRAITS OBSERVED BW**

Weight	Actual birth weight	EMA	Scrotal	Frame	Purchaser	Price

**LOT 22****CIRCLE 8 F115 (MBR)(AI)**

DOB 10/06/2010 (14 MTHS)  
 Breed: Hybrid 50% BLK Simmental 50% Angus

Sire: TNT DUAL FOCUS T249(MBR) ZSIIMUDC249

Animal: CIRCLE 8 F115(MBR)(AI) BBBF115

NICHOLS LEGACY G151 (P) (BL)(MBR) ZSIIMUPS15  
 CNS DREAM ON L186 (P) (BL) (ET)(MBR) ZSIIMUPW186  
 CNS SHEEZA DREAM K107W(MBR) ZSIPEDBX1948

Dam: CIRCLE 8 ROSEBUD C134(MBR)(AI)(ET) BBBC134

B/R NEW DIMENSION 7127 USA7127  
 CIRCLE 8 7127 ROSEBUD Z155(AI)(ET) BBBZ155  
 CIRCLE 8 ROSE BUD V105(AI)(ET) BBBV105

Scan data collected on the 16/06/2011

SCROTAL	P8	RIB	EMA	IMF
38	9	9	91	5.1

Notes: at 30kg born out of a Dream On you could say F115 could have an interesting application as a heifer bull with 38cm nuts and a 91 EMA he will have some interesting feeder cattle as well. Soft, long and thick a trade mark of the TNT Dual focus cattle.

**TRAITS OBSERVED BW**

Weight	Actual birth weight	EMA	Scrotal	Frame	Purchaser	Price

**LOT 23****CIRCLE 8 F140 (MBR)(AI)**

DOB 18/07/2010 (13 MTHS)  
 Breed: Hybrid 50% BLK Simmental 50% Angus

Sire: TNT DUAL FOCUS T249(MBR) ZSIIMUDC249

Animal: CIRCLE 8 F140(MBR)(AI) BBBF140

NICHOLS LEGACY G151 (P) (BL)(MBR) ZSIIMUPS15  
 CNS DREAM ON L186 (P) (BL) (ET)(MBR) ZSIIMUPW186  
 CNS SHEEZA DREAM K107W(MBR) ZSIPEDBX1948

Dam: CIRCLE 8 CHAMPANGE B128(MBR)(AI)(ET) BBBB128

C A FUTURE DIRECTION 5321 USA5321  
 CIRCLE 8 5321 CHAMPANGE X83(AI)(ET) BBBX83  
 CIRCLE 8 CHAMPAGNE T42(AI)(ET) BBT42

Scan data collected on the 16/06/2011

SCROTAL	P8	RIB	EMA	IMF
38	9	7	94	4.4

Notes: If you look into this pedigree it is littered with some of the biggest names of both the Angus and Simmental populations, Papa Equator 2928, Future Direction, Focus, HC Hummer and Dream on. The grand dam of this bull is a trait leader for B3 index. Length and softness and muscle.

**TRAITS OBSERVED BW**

Weight	Actual birth weight	EMA	Scrotal	Frame	Purchaser	Price

**LOT 24****CIRCLE 8 F129 (MBR)(AI)**

DOB 12/07/2010 (13 MTHS)  
 Breed: Hybrid 50% BLK Simmental 50% Angus

Sire: CIRCLE 8 D118(MBR)(ET) BBBD118

Animal: CIRCLE 8 F129(MBR)(AI) BBBF129  
 NICHOLS LEGACY G151 (P) (BL)(MBR) ZSIIMUPS15  
 CNS DREAM ON L186 (P) (BL) (ET)(MBR) ZSIIMUPW186  
 CNS SHEEZA DREAM K107W(MBR) ZSIPEDBX1948  
 Dam: CIRCLE 8 ROSEBUD C133(MBR)(AI)(ET) BBBC133  
 C A FUTURE DIRECTION 5321 USA5321  
 CIRCLE 8 5321 ROSE BUD X85(AI) BBBX85  
 CIRCLE 8 ROSE BUD V97(AI)(ET) BBBV97

Scan data collected on the 16/06/2011

SCROTAL	P8	RIB	EMA	IMF
32	10	6	93	5.4

Notes: A combination of our two best cow families Perfection and Rosebuds. F129 is a stylish very soft easy fleshing Lucky Dice grandson. We would use him to create nice replacements and excellent feeders.

**TRAITS OBSERVED BW**

Weight	Actual birth weight	EMA	Scrotal	Frame	Purchaser	Price

**LOT 25****CIRCLE 8 F102 (MBR)(AI)**

DOB 25/06/2010 (14 MTHS)  
 Breed: Hybrid 62.5% BLK Simmental 37.5% Angus

Sire: TNT DUAL FOCUS T249(MBR) ZSIIMUDC249

Animal: CIRCLE 8 F102(MBR)(AI) BBBF102  
 SRS J914 PREFERRED BEEF (P) (BL)(MBR) ZSIIMUPU914  
 ES DAKOTA NK68 (P) (BL)(MBR) ZSIIMUPY068  
 ESK68(MBR) ZSIPEDBX1979  
 Dam: CIRCLE 8 CHAMPANGE D235(MBR)(ET) BBBD235  
 CNS DREAM ON L186 (P) (BL) (ET)(MBR) ZSIIMUPW186  
 CIRCLE 8 CHAMPANGE B107(MBR)(AI)(ET) BBBB107  
 CIRCLE 8 5321 CHAMPANGE X83(AI)(ET) BBBX83

Scan data collected on the 16/06/2011

SCROTAL	P8	RIB	EMA	IMF
39	10	7	90	4.3

Notes: F102 gets the bases for commercial beef production covered very well. He is deep bodied, thick and super soft moving freely over a wide base.

**TRAITS OBSERVED BW**

Weight	Actual birth weight	EMA	Scrotal	Frame	Purchaser	Price

**LOT 26****CIRCLE 8 E36 (MBR)(ET)**

DOB 28/08/2009 (12 MTHS)  
 Breed: Hybrid 50% BLK Simmental 50% Angus

Sire: HC HUMMER 12M(MBR) ZSIIMUPX012

Animal: CIRCLE 8 E36(MBR)(ET) BBBE36  
 PARAMONT AMBUSH 2172 USA2172  
 B C C BUSHWACKER 41-93 USA41-93  
 R C ANITA T BANDO 918903 USA918903  
 Dam: CIRCLE 8 41-93 PERFECTION Z180(AI)(ET) BBBZ180  
 B/R NEW DIMENSION 7127 USA7127  
 CIRCLE 8 7127 PERFECTION W75(AI)(ET) BBBW75  
 CIRCLE 8 PERFECTION OF USA155 T28(AI)(ET) BBBT28

Scan data collected on the 16/06/2011

SCROTAL	P8	RIB	EMA	IMF
43	7	7	112	5.5

BWT	200	400	600	SS	EMA	RIB	P8	RBY	IMF%
EBV.4	24	45	56	1.5	3.5	1.1	0.4	1	0.2

**TRAITS OBSERVED BW**

Weight	Actual birth weight	EMA	Scrotal	Frame	Purchaser	Price

Average EBVS for the E group bulls only

BWT	200	400	600	SS	EMA	RIB	P8	RBY	IMF%
3.6	27	48	60	0.5	0.5	-0.4	0.8	0.42	

**LOT 27****CIRCLE 8 E41 (MBR)(ET)**

DOB 01/09/2009 (23 MTHS)

Breed: Hybrid 50% BLK Simmental 50% Angus

Sire: HC HUMMER 12M(MBR) ZSIIMUPX012

Animal: CIRCLE 8 E41(MBR)(ET) BBBE41

PARAMONT AMBUSH 2172 USA2172

B C C BUSHWACKER 41-93 USA41-93

R C ANITA T BANDO 918903 USA918903

Dam: CIRCLE 8 41-93 PERFECTION Z180(AI)(ET) BBBZ180

B/R NEW DIMENSION 7127 USA7127

CIRCLE 8 7127 PERFECTION W75(AI)(ET) BBBW75

CIRCLE 8 PERFECTION OF USA155 T28(AI)(ET) BBT28

Scan data collected on the 16/06/2011

SCROTAL	P8	RIB	EMA	IMF
42	7	7	107	4.6

BWT	200	400	600	SS	EMA	RIB	P8	RBY	IMF%
EBV.4	33	59	69	1.1	2.9	-0.1	-0.7	1.3	0.1

**TRAITS OBSERVED BW**

Weight	Actual birth weight	EMA	Scrotal	Frame	Purchaser	Price

**LOT 28****CIRCLE 8 E48 (MBR)(ET)**

DOB 06/09/2009 (23 MTHS)

Breed: Hybrid 75% BLK Simmental 25% Angus

Sire: SRS RIGHT-ON 22R (P) (BL)(MBR) ZSIIMUPA022

Animal: CIRCLE 8 E48(MBR)(ET) BBBE48

NICHOLS LEGACY G151 (P) (BL)(MBR) ZSIIMUPS15

CNS DREAM ON L186 (P) (BL) (ET)(MBR) ZSIIMUPW186

CNS SHEEZA DREAM K107W(MBR) ZSIPEDBX1948

Dam: CIRCLE 8 ROSEBUD C118(MBR)(AI)(ET) BBBC118

B/R NEW DESIGN 036 USA036

CIRCLE 8 036 ROSEBUD Z151(AI)(ET) BBBZ151

CIRCLE 8 ROSE BUD V105(AI)(ET) BBBV105

Scan data collected on the 16/06/2011

SCROTAL	P8	RIB	EMA	IMF
38	10	8	110	5.5

BWT	200	400	600	SS	EMA	RIB	P8	RBY	IMF%
EBV.6	23	43	56	0.5	1.3	0.7	0.2	0.3	0.6

**TRAITS OBSERVED BW**

Weight	Actual birth weight	EMA	Scrotal	Frame	Purchaser	Price

**LOT 29****CIRCLE 8 E38(MBR)(ET)**

DOB 29/08/2009 (24 MTHS)

Breed: Hybrid 75% BLK Simmental 25% Angus

Sire: SRS RIGHT-ON 22R (P) (BL)(MBR) ZSIIMUPA022

Animal: CIRCLE 8 E38(MBR)(ET) BBBE38

NICHOLS LEGACY G151 (P) (BL)(MBR) ZSIIMUPS15

CNS DREAM ON L186 (P) (BL) (ET)(MBR) ZSIIMUPW186

CNS SHEEZA DREAM K107W(MBR) ZSIPEDBX1948

Dam: CIRCLE 8 ROSEBUD C118(MBR)(AI)(ET) BBBC118

B/R NEW DESIGN 036 USA036

CIRCLE 8 036 ROSEBUD Z151(AI)(ET) BBBZ151

CIRCLE 8 ROSE BUD V105(AI)(ET) BBBV105

Scan data collected on the 16/06/2011

SCROTAL	P8	RIB	EMA	IMF
40	7	5	105	5.3

BWT	200	400	600	SS	EMA	RIB	P8	RBY	IMF%
EBV.2	22	43	56	0.4	1.9	0.9	0.2	0.5	0.6

**TRAITS OBSERVED BW**

Weight	Actual birth weight	EMA	Scrotal	Frame	Purchaser	Price

Average EBVS for the E group bulls only

BWT	200	400	600	SS	EMA	RIB	P8	RBY	IMF%
3.6	27	48	60	0.5	0.5	-0.4	0.8	0.42	

# LOT 30

# CIRCLE 8 E12 (MBR)(ET)

DOB 09/08/2009 (24 MTHS)  
Breed: Hybrid 50% BLK Simmental 50% Angus

Sire: GW LUCKY DICE 187H (P) (BL)(MBR) ZSIIMUPT187

Animal: CIRCLE 8 E12(MBR)(ET) BBBE12

G A R PRECISION 1680 USA1680  
C A FUTURE DIRECTION 5321 USA5321  
C A MISS POWER FIX 308 USA12054694

Dam: CIRCLE 8 5321 ROSE BUD X85(AI) BBBX85

PAPA EQUATOR 2928 USA2928  
CIRCLE 8 ROSE BUD V97(AI)(ET) BBBV97  
WHITE LAKES PURE HOPE(AI)(ET) WWLP11

Scan data collected on the 16/06/2011

SCROTAL	P8	RIB	EMA	IMF
38	10	9	115	6.1

BWT	200	400	600	SS	EMA	RIB	P8	RBY	IMF%
EBW0.7	18	35	43	1	3.4	0.8	0.6	0.1	1

### TRAITS OBSERVED BW

Weight	Actual birth weight	EMA	Scrotal	Frame	Purchaser	Price

Average EBVS for the E group bulls only

BWT	200	400	600	SS	EMA	RIB	P8	RBY	IMF%
3.6	27	48	60	0.5	0.5	-0.4	0.8	0.42	

# LOT 31

# CIRCLE 8 F148 (MBR)(AI)

DOB 19/07/2010 (13 MTHS)  
Breed: Hybrid 50% BLK Simmental 50% Angus

Sire: CIRCLE 8 D118(MBR)(ET) BBBD118

Animal: CIRCLE 8 F148(MBR)(AI) BBBF148

NICHOLS LEGACY G151 (P) (BL)(MBR) ZSIIMUPS15  
CNS DREAM ON L186 (P) (BL) (ET)(MBR) ZSIIMUPW186  
CNS SHEEZA DREAM K107W(MBR) ZSIPEDBX1948

Dam: CIRCLE 8 ROSEBUD C145(MBR)(AI)(ET) BBBC145

B/R NEW DIMENSION 7127 USA7127  
CIRCLE 8 7127 ROSEBUD Z155(AI)(ET) BBBZ155  
CIRCLE 8 ROSE BUD V105(AI)(ET) BBBV105

Scan data collected on the 16/06/2011

SCROTAL	P8	RIB	EMA	IMF
41	7	6	91	4.6

### TRAITS OBSERVED BW

Weight	Actual birth weight	EMA	Scrotal	Frame	Purchaser	Price

# LOT 32

# CIRCLE 8 F131(MBR)(AI)

DOB 19/07/2010 (13 MTHS)  
Breed: Hybrid 25% BLK Simmental 75% Angus

Sire: CIRCLE 8 D118(MBR)(ET) BBBD118

Animal: CIRCLE 8 F131(MBR)(AI) BBBF131

V D A R NEW TREND 315 USA315  
B/R NEW DESIGN 036 USA036  
B/R BLACKCAP EMPRESS 76 USA76

Dam: CIRCLE 8 036 PERFECTION Z166(AI)(ET) BBBZ166

G T JET MAX USA155  
CIRCLE 8 PERFECTION OF USA155 T28(AI)(ET) BBBT28  
SANDON PERFECTION P13(AI) QASP13

Scan data collected on the 16/06/2011

SCROTAL	P8	RIB	EMA	IMF
30	7	6	83	4.5

### TRAITS OBSERVED BW

Weight	Actual birth weight	EMA	Scrotal	Frame	Purchaser	Price

**LOT 33****CIRCLE 8 F125 (MBR)(AI)**

DOB 12/07/2010 (13 MTHS)

Breed: Hybrid 62.5% BLK Simmental 37.5% Angus

Sire: CIRCLE 8 C139(MBR)(AI)(ET) BBBC139

Animal: CIRCLE 8 F125(MBR)(AI) BBBF125

SRS J914 PREFERRED BEEF (P) (BL)(MBR) ZSIIMUPU914  
ES DAKOTA NK68 (P) (BL)(MBR) ZSIIMUPY068  
ESK68(MBR) ZSIPEDBX1979

Scan data collected on the 16/06/2011

SCROTAL	P8	RIB	EMA	IMF
36	5	4	87	3.7

Dam: CIRCLE 8 CHAMPANGE D242(MBR)(ET) BBBD242

CNS DREAM ON L186 (P) (BL) (ET)(MBR) ZSIIMUPW186  
CIRCLE 8 CHAMPANGE B107(MBR)(AI)(ET) BBBB107  
CIRCLE 8 5321 CHAMPANGE X83(AI)(ET) BBBX83**TRAITS OBSERVED BW**

Weight	Actual birth weight	EMA	Scrotal	Frame	Purchaser	Price

**LOT 34****CIRCLE 8 BBB F145 (MBR)(AI)**

DOB 13/07/2010 (13 MTHS)

Breed: Hybrid 50% BLK Simmental 50% Angus

Sire: BBB C139

Animal: CIRCLE 8 BBB F145

B/R NEW DIMENSION 7127 USA 7127  
CIRCLE 8 EPONYMOUS Y60 (AI) (ET) BBB Y60  
CIRCLE 8 ROSEBUD V97 (AI) (ET)

Scan data collected on the 16/06/2011

SCROTAL	P8	RIB	EMA	IMF
37	8	6	86	4.8

Dam: DAM: CIRCLE 8 12

COMMERCIAL ANGUS COW

**TRAITS OBSERVED BW**

Weight	Actual birth weight	EMA	Scrotal	Frame	Purchaser	Price

**LOT 35****CIRCLE 8 F105 (MBR)(AI)**

DOB 28/05/2010 (15 MTHS)

Breed: Hybrid 50% BLK Simmental 50% Angus

Sire: TNT DUAL FOCUS T249(MBR) ZSIIMUDC249

Animal: CIRCLE 8 F105(MBR)(AI) BBBF105

LCHMAN LUCKY BUCK 7049C (BL)(MBR) ZSIN7049C  
GW LUCKY DICE 187H (P) (BL)(MBR) ZSIIMUPT187  
407D (BL)(MBR) ZSIP407D

Scan data collected on the 16/06/2011

SCROTAL	P8	RIB	EMA	IMF
38	10	10	89	4.4

Dam: CIRCLE 8 ROSEBED D119(MBR)(ET) BBBD119

B/R NEW DIMENSION 7127 USA7127  
CIRCLE 8 7127 ROSEBUD Z155(AI)(ET) BBBZ155  
CIRCLE 8 ROSE BUD V105(AI)(ET) BBBV105**TRAITS OBSERVED BW**

Weight	Actual birth weight	EMA	Scrotal	Frame	Purchaser	Price

# LOT 36

# CIRCLE 8 F108 (MBR)(AI)

DOB 06/06/2010 (14 MTHS)

Breed: Hybrid 50% BLK Simmental 50% Angus

Sire: TNT DUAL FOCUS T249(MBR) ZSIIMUDC249

Animal: CIRCLE 8 F108(MBR)(AI) BBBF108

LCHMAN LUCKY BUCK 7049C (BL)(MBR) ZSIN7049C  
 GW LUCKY DICE 187H (P) (BL)(MBR) ZSIIMUPT187  
 407D (BL)(MBR) ZSIP407D

Scan data collected on the 16/06/2011

SCROTAL	P8	RIB	EMA	IMF
33	11	8	82	4.6

Dam: CIRCLE 8 ROSEBUD D115(MBR)(AI)(ET) BBBD115

B/R NEW DIMENSION 7127 USA7127  
 CIRCLE 8 7127 ROSEBUD Z155(AI)(ET) BBBZ155  
 CIRCLE 8 ROSE BUD V105(AI)(ET) BBBV105

### TRAITS OBSERVED BW

Weight	Actual birth weight	EMA	Scrotal	Frame	Purchaser	Price

# LOT 37

# CIRCLE 8 F150 (MBR)(AI)

DOB 20/07/2010 (13 MTHS)

Breed: Hybrid 25% BLK Simmental 75% Angus

Sire: CIRCLE 8 D118(MBR)(ET) BBBD118

Animal: CIRCLE 8 F150(MBR)(AI) BBBF150

S A F FOCUS OF E R USA6163  
 BALDRIDGE NEBRASKA 901 USA13412671  
 BALDRIDGE FLOSSIE 367 USA12885591

Scan data collected on the 16/06/2011

SCROTAL	P8	RIB	EMA	IMF
35	7	7	92	5.4

Dam: CIRCLE 8 PERFECTION C130(AI)(ET) BBBC130

G T JET MAX USA155  
 CIRCLE 8 PERFECTION OF USA155 T28(AI)(ET) BBT28  
 SANDON PERFECTION P13(AI) QASP13

### TRAITS OBSERVED BW

Weight	Actual birth weight	EMA	Scrotal	Frame	Purchaser	Price

# LOT 38

# CIRCLE 8 F144 (MBR)(AI)

DOB 19/07/2010 (13 MTHS)

Breed: Hybrid 50% BLK Simmental 50% Angus

Sire: CIRCLE 8 D118(MBR)(ET) BBBD118

Animal: CIRCLE 8 F144(MBR)(AI) BBBF144

CNS DREAM ON L186 (P) (BL) (ET)(MBR) ZSIIMUPW186  
 CIRCLE T ANTOINETTES STAR (P) (BL) (ET)(MBR) ZSIIMUPZ012  
 NJC SVF ANTOINETTE K205(MBR) ZSIPEDBX3189

Scan data collected on the 16/06/2011

SCROTAL	P8	RIB	EMA	IMF
36	8	6	80	4.9

Dam: CIRCLE 8 PERFECTION C192(MBR)(AI)(ET) BBBC192

B/R NEW DIMENSION 7127 USA7127  
 CIRCLE 8 PERFECTION Y68(AI)(ET) BBBY68  
 CIRCLE 8 WET DREAMS R17(AI)(ET) BBBR17

### TRAITS OBSERVED BW

Weight	Actual birth weight	EMA	Scrotal	Frame	Purchaser	Price

# LOT 39

# CIRCLE 8 F122 (MBR)(AI)

DOB 07/07/2010 (13 MTHS)

Breed: Hybrid 50% BLK Simmental 50% Angus

Sire: CIRCLE 8 C139(MBR)(AI)(ET) BBBC139

Animal: CIRCLE 8 F122(MBR)(AI) BBBF122

LCHMAN LUCKY BUCK 7049C (BL)(MBR) ZSIN7049C  
 GW LUCKY DICE 187H (P) (BL)(MBR) ZSIIMUPT187  
 407D (BL)(MBR) ZSIP407D

Scan data collected on the 16/06/2011

SCROTAL	P8	RIB	EMA	IMF
34	8	7	84	5.1

Dam: CIRCLE 8 PERFECTION D116(MBR)(ET) BBBD116

B/R NEW DIMENSION 7127 USA7127  
 CIRCLE 8 PERFECTION Y70(AI)(ET) BBBY70  
 CIRCLE 8 365 PERFECTION T29(AI)(ET) BBT29

### TRAITS OBSERVED BW

Weight	Actual birth weight	EMA	Scrotal	Frame	Purchaser	Price

**LOT 40****CIRCLE 8 F151 (MBR)(AI)**

DOB 21/07/2010 (13 MTHS)

Breed: Hybrid 50% BLK Simmental 50% Angus

Sire: CIRCLE 8 D118(MBR)(ET) BBBD118

Animal: CIRCLE 8 F151(MBR)(AI) BBBF151

NICHOLS LEGACY G151 (P) (BL)(MBR) ZSIIMUPS15  
CNS DREAM ON L186 (P) (BL) (ET)(MBR) ZSIIMUPW186  
CNS SHEEZA DREAM K107W(MBR) ZSIPEDBX1948

Dam: CIRCLE 8 PERFECTION C117(MBR)(ET) BBBC117

B/R NEW DIMENSION 7127 USA7127  
CIRCLE 8 7127 PERFECTION Z140(AI)(ET) BBBZ140  
SANDON PERFECTION P13(AI) QASP13

Scan data collected on the 16/06/2011

SCROTAL	P8	RIB	EMA	IMF
35	7	7	85	5

**TRAITS OBSERVED BW**

Weight	Actual birth weight	EMA	Scrotal	Frame	Purchaser	Price

**LOT 41****CIRCLE 8 F120(MBR)(AI)**

DOB 1/07/2010 (13 MTHS)

Breed: Hybrid 50% BLK Simmental 50% Angus

Sire: CIRCLE 8 C139(MBR)(AI)(ET) BBBC139

Animal: CIRCLE 8 F120(MBR)(AI) BBBF120

KENCO/MF POWERLINE 204L(MBR) ZSI2115962  
LBR CROCKETT R81(MBR)(RED) ZSIIMUPA081  
LBR NIGHT DREAM M22(MBR) ZSI2177957

Dam: CIRCLE 8 PERFECTION D107(MBR)(ET) BBBD107

B/R NEW DIMENSION 7127 USA7127  
CIRCLE 8 PERFECTION Y70(AI)(ET) BBBY70  
CIRCLE 8 365 PERFECTION T29(AI)(ET) BBBT29

Scan data collected on the 16/06/2011

SCROTAL	P8	RIB	EMA	IMF
38	9	7	85	4.2

**TRAITS OBSERVED BW**

Weight	Actual birth weight	EMA	Scrotal	Frame	Purchaser	Price

**LOT 42****CIRCLE 8 F149 (MBR)(AI)**

DOB 20/07/2010 (13 MTHS)

Breed: Hybrid 50% BLK Simmental 50% Angus

Sire: CIRCLE 8 D118(MBR)(ET) BBBD118

Animal: CIRCLE 8 F149(MBR)(AI) BBBF149

NICHOLS LEGACY G151 (P) (BL)(MBR) ZSIIMUPS15  
CNS DREAM ON L186 (P) (BL) (ET)(MBR) ZSIIMUPW186  
CNS SHEEZA DREAM K107W(MBR) ZSIPEDBX1948

Dam: CIRCLE 8 ROSEBUD C145(MBR)(AI)(ET) BBBC145

B/R NEW DIMENSION 7127 USA7127  
CIRCLE 8 7127 ROSEBUD Z155(AI)(ET) BBBZ155  
CIRCLE 8 ROSE BUD V105(AI)(ET) BBBV105

Scan data collected on the 16/06/2011

SCROTAL	P8	RIB	EMA	IMF
34	6	5	83	3.8

**TRAITS OBSERVED BW**

Weight	Actual birth weight	EMA	Scrotal	Frame	Purchaser	Price



*“Far better it is to dare mighty things, to win glorious triumphs, even though checkered by failure, than to take rank with those poor spirits who neither enjoy nor suffer much, because they live in the gray twilight that knows neither victory nor defeat.”*

*Theodore Roosevelt (1858-1919)*



## YEARLINGS BECOMING POPULAR

In Australia and other parts of the world, there is a trend towards using bulls at yearling age (12–18 months). This allows introduction of superior genetic material into herds a year earlier than normal, resulting in faster genetic improvement.

Their introduction has the potential to allow breeders to extend the working lives of bulls by a year or more, lowering the bulls costs of a herd. This extra workload is achieved at the time in their lives when they are young, lean, fit and exuberant. They are free of the structural problems that beset older bulls.

Yearling bulls have much to offer, both genetically and financially. However, poor management can reduce calving percentages, compromise animal welfare and limit their lifetime potential. In order to harness the immense potential of yearling bulls, special management is required—their age and physiological status demands it.

### Why are yearlings different?

Apart from their age, yearling bulls are different from older bulls in a number of ways. They are still growing strongly, and tend to be leaner, carrying less body fat reserves. They are usually fitter and more agile, although not necessarily stronger, than older bulls. They are also smaller in size and more subordinate to older bulls which makes them more injury-prone when mixed with them, especially in the sexually competitive environment of a joining group. Yearling bulls are usually sexually inexperienced, are more likely to be sexually immature, and their health and body condition are far more sensitive to poor nutrition and the challenges of internal and external parasites.

Although special management is required, much of it is common sense.

### Why use yearlings?

Cattle producers with experience in managing yearlings often say that they prefer them because they settle in better, mix with other cattle more easily and are easier to handle than older bulls. However, there are some far more tangible incentives in using them.

In south-eastern Australia, the average working life of a bull is less than 3 years—not a very satisfactory performance for one of the main operational costs of a beef cattle enterprise. By first using bulls as yearlings, the working life of a bull can be extended by a year or more—a 25% increase. As a result, the purchase price and running costs of bulls can be spread over more calves. This reduces bull costs per calf and boosts profitability.

Yearling bulls also allow cattle breeders the opportunity to achieve faster rates of genetic improvement. This is due to the influence of what geneticists call 'generation interval', that is, the average age of parents when their calves are born. By using genetically superior bulls as young as possible, faster turnover rates of genes are achieved. Joining yearling bulls to yearling heifers can maximise genetic improvement by lowering generation intervals.

Yearling bulls are significantly less costly to produce. Seedstock suppliers sell their bulls 6–12 months earlier, which simplifies their management and reduces overheads.

In addition to these advantages, there is strong circumstantial evidence to suggest that bulls used first as yearlings have even longer working lives because of superior fitness and lower levels of body fat. The more active lives of these bulls means that they are maintained at body weights below their genetic potential. As a result, less stress is placed on their skeletal structure when serving, with less likelihood of breakdowns occurring.

The two biggest causes of breakdowns in bulls are hip arthritis (over 50% of all wastage) and broken penis. Overconditioning bulls for shows and sales, especially multivendor sales, exacerbates both these conditions. It would appear that bulls used first as yearlings are less affected by these serious sources of economic loss.

### Will yearling bulls be sexually mature?

British breed yearling bulls will generally be sexually mature if they:

- are well grown
- are in good condition (fat score of high 2 or low 3)
- are 12 months of age or older
- have a scrotal circumference of 32 cm or more at 12–14 months.

The onset of puberty is directly related to the level of nutrition. Bulls on a high plane of nutrition are more likely to reach puberty at a younger age. In some cases, this may be as young as 8 months of age. Poorly grown or low-condition bulls are risky for use as yearlings, as they may not have reached puberty.

Around puberty, testicles grow very quickly, resulting in a rapid increase in scrotal circumference. In well-grown British breeds this 'growth spurt' is normally expected to take place between 8 and 13 months of age, under optimal nutrition.

In general, some European breeds and *Bos indicus*, or their derivatives, reach sexual maturity later than British breeds. As a result, they are often not suitable for use at yearling age.

Dr Glen Coulter of the Agriculture Canada Research Station, Alberta, has documented the minimal scrotal sizes across all breeds. These are based on thousands of measurements and are set out in the table below.

#### Minimum scrotal sizes (cm)

Age (mths)	Simmental	Angus Charolais	Hereford Shorthorn	Limousin Bos indicus
12–14	33	32	31	30
15–20	35	34	33	32
21–30	36	35	34	33
30+	37	36	35	34

Dr Coulter suggests that cattle producers should select bulls with scrotal sizes substantially greater than these minimums. He suggests that bulls with scrotal sizes less than these minimums are likely to have limited sperm-producing capacity and unacceptable fertility under moderate to heavy mating loads.

### Serving ability

Yearling bulls are usually sexually inexperienced. As a result, they are sometimes, but not always, a little clumsy and awkward. However, young bulls have very steep learning curves. This learning phase may cause minor delays in the start of calving. Should this be a problem,

joining should start 7 or 14 days earlier than normal to compensate for the slight delay.

### **Mating management**

Yearling bulls can be effectively joined either individually or in peer groups. They should not be joined in a group with older bulls because of 'dominance'.

In a mixed group, older bulls may get up to 75% of the cows in calf while young, subordinate bulls miss out. Joining yearlings with older bulls is not only wasteful and inefficient, it is also risky, as the young bulls tend to be more injury-prone. In addition, there is less risk of exposure to venereal diseases when young bulls are joined in peer groups.

### **Single or multiple joining?**

Bulls that are being watched by other bulls are likely to serve females more often—they respond to an audience. Conception rates in multiple-joining groups are usually higher, which is understandable, since there are more services made in multiple-joining groups than in single-joining groups.

It is not uncommon for bulls joined in groups to fight in the first week of joining, even though they had been run together before joining. Apparently they sometimes need to re-establish a pecking order. This settling-down phase may help explain why calves occasionally start arriving later than they should.

Multiple-joining groups have traditionally been a kind of on-farm insurance policy against the risk of having a dud—if one bull in the group is freeloading, the others will cover for him, and so conception rates don't suffer. But the insurance does not come free (it never does). There is evidence that injury rates in multiple-joining groups are higher, especially when the bulls in the group are of different ages.

The incidence of 'broken penis' is higher in multiple groups, especially when young bulls are joined in a group with older bulls. Yearling bulls should never be joined with older bulls—the risk of injury is just too great. They should be joined either by themselves or with other yearlings.

### **Won't yearlings be too small to reach my cows?**

If the biggest cows in a joining group fail to conceive, size may be a factor. However, it is risky making 'blanket' statements. The sexual prowess of some small, high-serving, yearling bulls serving dry cows significantly larger than themselves has been witnessed at Trangie Agricultural Research Station, and one wonders how it was physically possible. Sex is apparently a wonderful motivator!

### **Won't joining bulls as yearlings knock them around?**

Bulls do not die from too much sex. However, they do lose condition. This will depend on their health, the quality of their feed, the length of the joining period and the number of females they are joined with. A lot of common sense is needed in order to strike a balance. In extensive areas with only average or poor quality feed, the joining season should be restricted to 6–8 weeks.

The use of yearling bulls is limited only by their health and fitness. It does not matter whether they 'won't grow out' as it's just not relevant. If our beef industry is to make progress, we must purge our minds of the belief that a bull has to be fat and well grown to be any good. The value of a bull should be measured by the performance of his offspring—not on what he looks like. After all, when was the last time you saw a fat rabbit, fox or roo? Those species carry no subcutaneous fat, yet they don't appear to be facing extinction!

Maintaining bulls in anything fatter than 2 or 3 score condition is wasteful, counterproductive and inefficient. Bulls that are allowed to get fatter than this are either sexually inactive or under-used.

### **Won't yearling bulls have smaller calves?**

It is surprising how many cattle producers think that young bulls are more likely to sire small calves. They are purchased in the mistaken belief that they can reduce calving difficulties. Clearly that is not the case. There is no relationship between the age of a bull at joining and the weights of his calves.

The birthweight of calves is heritable, so a bull will influence, genetically, the birthweight of his calves.

If you are concerned about birthweight, buy a bull that has a low estimated breeding value (EBV) for birthweight, or one that had a lower birthweight than the average of other bull calves in the same drop. If data on birthweights is unavailable, select a bull of only moderate size or one that has been successfully delivered by a heifer. In general, larger framed bulls tend to have heavier calves at birth.

Mating large-framed bulls to small-framed heifers or cows will increase the risk of calving problems. The practice may also lead to animal welfare problems.

### **Mating potential**

A more conservative approach is needed in the first year, until you have a track record for the performances of yearling bulls on your farm. In these situations, mating loads of only 25–30 females are recommended.

The condition of the yearling bulls is critical. If they drop below 2 score condition, sperm production may be impaired.

### **Summary**

In order to harness the potential of yearling bulls there are three crucial management requirements:

1. Join them either alone or with bulls of the same age.
2. Join yearling bulls for 6–8 weeks (2 cycles) only, then spell them for at least 3 months.
3. After removing yearling bulls from their joining groups, place them on high quality feed in specially prepared paddocks.
4. Experience has shown that many young bulls have been ruined because they have been joined for too long and under conditions that have challenged their survival. If, at any stage, yearling bulls drop below 2 score condition, they should be withdrawn from their joining group immediately.

**CIRCLE 8 C139 (MBR)(AI)(ET)**

DOB 23/03/2007

Sire: CNS DREAM ON L186 (P) (BL) (ET)(MBR) ZSIIMUPW186

Animal: CIRCLE 8 C139(MBR)(AI)(ET) BBBC139

V D A R NEW TREND 315 USA315

B/R NEW DESIGN 036 USA036

B/R BLACKCAP EMPRESS 76 USA76

Dam: CIRCLE 8 036 PERFECTION Z128(AI)(ET) BBBZ128

G T JET MAX USA155

CIRCLE 8 PERFECTION OF USA155 T28(AI)(ET) BBBT28

SANDON PERFECTION P13(AI) QASP13

**CIRCLE 8 D118 (MBR)(ET)**

DOB 11/06/2008

Sire: GW LUCKY DICE 187H (P) (BL)(MBR) ZSIIMUPT187

Animal: CIRCLE 8 D118(MBR)(ET) BBBD118

B/R NEW DESIGN 036 USA036

B/R NEW DIMENSION 7127 USA7127

B/R RUBY OF TIFFANY 4117 USA4117

Dam: CIRCLE 8 PERFECTION Y70(AI)(ET) BBBY70

TC STOCKMAN 365 USA365

CIRCLE 8 365 PERFECTION T29(AI)(ET) BBBT29

SANDON PERFECTION P13(AI) QASP13

“

*“Hybrid genetics are successful in combining reproduction, growth and carcass traits into simple, well designed breeding programs for the commercial industry. The use of F1 (first cross resulting from two purebred parents) bulls goes a long way towards providing a simple cross breeding solution”*

Dr Harlan Ritchie, Distinguished Animal Science Professor, Michigan State University.

”

“

*“If you are looking for additional fertility and production from your cow herd, Sim Angus or Sim Red Angus females are the way to go. In over 48,000 comparisons from our heifer development program, we routinely observe a 8 - 10% increase in fertility from these hybrid line females when compared to straight breeds. This combined with superior milk and maternal traits, make these females hard to beat in any production system.”*

Dr Patsy Houghton, General Manager, Heartland Cattle Company, McCook, NE.

”

# TNT DUAL FOCUS T249(MBR)

DOB 24/02/2007



**Sire: S A F FOCUS OF E R USA6163**

**Animal: TNT DUAL FOCUS T249(MBR) ZSIIMUDC249**

WLE POWER STROKE(MBR) ZSIPEDBX1729

HC HUMMER 12M(MBR) ZSIIMUPX012

LBR DESTINY'S DREAM K830 ZSIPEDBX1732

**Dam: TNT MISS R77(MBR) ZSIPEDBX3854**

GFI MAGNUM K52(MBR) ZSIPEDBX3545

TNT MISS NEVA N9(MBR) ZSIPEDBX3853

3C CROCUS F592 B(MBR) ZSIPEDBX3852

# GW LUCKY DICE 187H (P) (BL) (MBR)

DOB 02/28/1998



**Sire: LCHMAN LUCKY BUCK 7049C (BL)(MBR) ZSIN7049C**

**Animal: GW LUCKY DICE 187H (P) (BL)(MBR) ZSIIMUPT187**

LANDRIDGE JET BLACK (BL)(MBR) ZSIPEDBX1080

CIRCLE S LEACHMAN 600U (BL)(MBR) ZSIPEDBX1083

BDV R52 MS BLACK KNIGHT (BL)(MBR) ZSIPEDBX1082

**Dam: 407D (BL)(MBR) ZSIP407D**

BS MR BUTKUS 17W (BL)(MBR) ZSI17W

GW MISS BUTKUS 428B (BL)(MBR) ZSIM428B

832X (BL)(MBR) ZSI832X

**HC HUMMER 12M**

DOB 23/02/2002

**Sire: WLE POWER STROKE ZSIPEDBX1729****Animal: HC HUMMER 12M ZSIIMUPX012**

CIRCLE S LEACHMAN 600U (BL) (MBR) ZSIPEDBX1083

NICHOLS BLK DESTINY D12 (MBR) ZSIPEDBX1592

NICHOLS KELLY 75U ZSIPEDBX1591

**Dam: LBR DESTINY'S DREAM K830 ZSIPEDBX1732**

BH RIGHT TIME 520E ZSIIMUPQ520

LBR RIGHT DREAM H830 (MBR) ZSIPEDBX1731

LBR D-430 ZSIPEDBX1730

**SRS RIGHT-ON 22R (P) (BL) (MBR)**

DOB 21/03/2005

**Sire: SRS J914 PREFERRED BEEF (P) (BL) (MBR) ZSIIMUPU914****Animal: SRS RIGHT-ON 22R (P) (BL) (MBR) ZSIIMUPA022**

BS MR ARAPAHOE 811A ZSIPEDBX2031

PTL CUTTING EDGE D209 (MBR) ZSIPEDBX1973

NLC B75 BARY ZSIPEDBX2334

**Dam: SRS G720 GILLIAN (MBR) ZSIPEDBX3251**

CIRCLE S LEACHMAN 600U (BL) (MBR) ZSIPEDBX1083

SRS E-5 EVA MARIE (MBR) ZSIPEDBX3250

SRS C-85 ZSIPEDBX3249

# CROSSBREDS VERSUS PUREBREDS

By Marty Ropp, ASA Director of Field Services and Commercial Programs



Crossbred commercial cows are absolutely more productive and more profitable than straight-bred commercial cows. End of story! We more often hear emphasis and promotion of the direct effects of individual heterosis and what it means to calf weights, because the effects are much more immediate and more easily quantified. By far the greatest positive effects of crossbreeding, however, are in the additional profitability it generates from the commercial cowherd. Sure, we can make poor decisions in a crossbreeding program to create an impractical or unproductive female; but, if we stay within reasonable parameters as far as breed choices and biological types that deliver value, heterosis always wins the day. The only remaining question is how much more valuable is a crossbred commercial female?

Research has repeatedly shown the lifetime production value advantage of a crossbred female over her purebred counterparts of up to 25%. That means that if an average straight-bred commercial female produces six calves averaging 500 pounds at weaning or 3,000 pounds of weaned calf, then her crossbred counterpart will produce about 3,750 pounds during her productive lifetime. Even at \$1.00 per pound, which I hope is not, but looks like it could be in our future, that extra production is worth about \$750.00 of increased lifetime production per cow or an increase of well over \$100.00 per cow per year. There is almost no other practice a commercial producer can adopt that will generate that much additional return to a cowherd enterprise on an annual basis. With the predictions of lower prices, added production costs and subsequent tighter margins for the beef business, these additional returns that come from hybrid vigor will be nearly impossible to ignore.

Where does the substantial added production come from? First, hybrid vigor has an enormous impact on fertility and longevity. Research shows that the average crossbred female will produce an extra calf in her lifetime when compared to her straight-bred counterparts. That means fewer replacements i.e. more calves to market, and a significant reduction in costs associated with female development. The rest of the advantage comes from the additional 10% production advantage per year that you should expect because of reduced calving interval, higher percent of calf crop weaned, increased milk production and faster growing calves.

What, then, are the downsides to using crossbred females? The primary additional cost comes from the approximately 75 pounds additional mature size associated with a crossbred cow compared to the average weight of the purebred parents and the increased cost associated with higher milk production. This added weight and production translates into increased maintenance and lactation nutritional requirements along with a slightly positive increase in cow salvage value. The other significant issue is the increased management required to develop and maintain a planned crossbreeding program for practical replacement female development while still producing a high-value

calf crop with built-in profitability for end users. For \$100.00+ additional production per cow, per year these arguments against using crossbred females are weak at best.

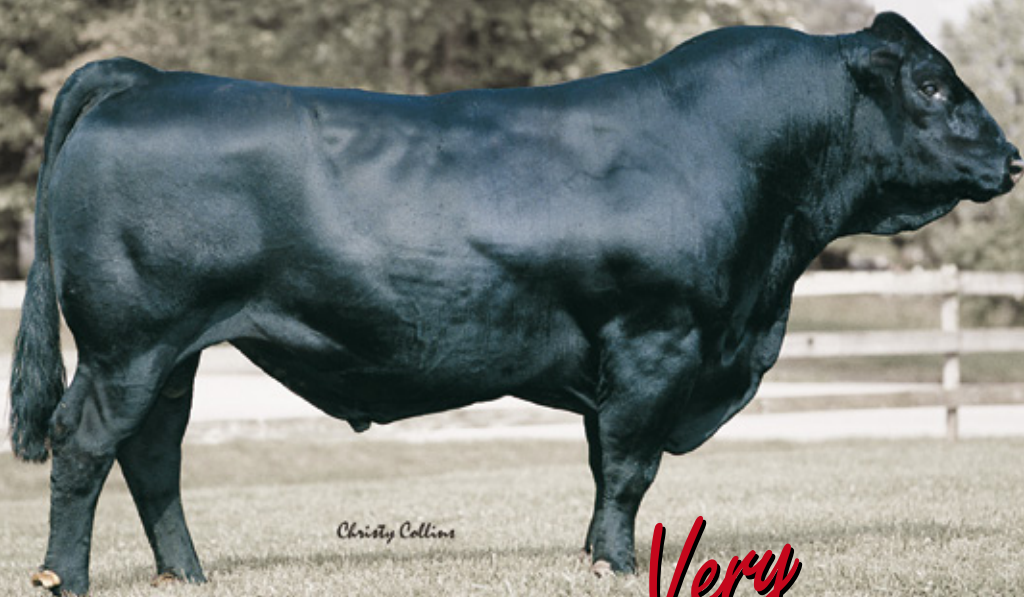
For most US production environments, females that are between 50% and 25% Continental genetics with the remaining 1/2 to 3/4 being British breeding are proving to have the most value. Matching biological type with optimum, profitable production levels for both the environmental resources and the marketing plan is the key. The greater the available nutritional resources, the higher the percentage Continental breeding that can be practically maintained in the cowherd and for challenging circumstances the less Continental that may be practically used. The exceptions are southern climates where a heat-adapted component in the commercial cow herd may be essential. In the case of Brahman genetics, these combinations actually generate slightly higher levels of heterosis than Continental x British crosses in addition to providing necessary environmental adaptability. In these cases, in addition to the British and Continental breeding, somewhere between 1/4 and 3/8 heat adapted genetics maintained in the cowherd seems to be sufficient for climate adaptability without sacrificing significant end product value in the offspring.

Conquering the management issues associated with planned crossbreeding systems can still be a challenge for some. There is a significant body of research that argues for purchasing all replacement females as the most cost effective way for commercial herds to manage crossbreeding systems and female development. For all the data favoring the added profitability of this type of program, uptake by the industry has been slow. Most commercial herds have and will continue to produce their own replacement females from within, primarily because of the cash outlay, supply availability and uncertainty associated with purchasing all replacements. This being the case, how can commercial herds best manage crossbreeding systems to optimize heterosis and promote the uniformity they need in their cowherd to make both management and calf marketing more effective. Composite bulls provide the answer for some to reduce management costs and still take advantage of heterosis.

By using composite bulls such as SimAngus, genetic management decisions and practices are greatly reduced and a 1/2 British, 1/2 Continental cowherd and calf crop can be a reality. For those who wish to maximize heterosis and are willing to more closely monitor breeding systems and replacements, rotational and roto-terminal crossbreeding systems absolutely can provide more hybrid vigor and higher levels of production. However you choose to implement programs to take advantage of the value of maternal heterosis, what's important is that you find a way to collect the dollars that are available by using it. There is no other single production practice that can increase the profitability of a livestock enterprise more than using crossbred females, and it's nearly free.

**ST**

# Simmental



*Christy Collins*

*Very*

## We've Been Busy!

### Calving Ease Program

4,000 British Heifers Mated  
Average Birth Weight 77.6 lbs.

### Carcass Program

Over 25,000 Cows Mated  
Average 75% Choice, Yield Grade 2.7

### Multi-Breed Focus

1st Multi-Breed Genetic Evaluation  
SimAngus Solutions  
Simbrah Maternal Power

"We're committed to producing cattle that calve easily, grow fast and efficiently and have distinct end product value."

*Dr. Jerry Lipsey, Executive Vice President,  
American Simmental Association*



AMERICAN  
**Simmental**  
ASSOCIATION

406-587-4531

e-mail: [simmental@simmgene.com](mailto:simmental@simmgene.com)  
website: [www.simmental.org](http://www.simmental.org)

Request your free *SimTalk* subscription:  
[register@simmgene.com](mailto:register@simmgene.com) • 800-593-2778



Lot 9 - E129



Lot 15 - F104

